

Accommodation at the Toulouse ENAC



LOUIS BLERIOT



Year
2017
2018

ECOLE NATIONALE DE L'AVIATION CIVILE

Contents



Ecole Nationale
de l'Aviation Civile
7 avenue Edouard Belin
CS 54005
31055 Toulouse Cedex 4

1 SITUATION AND ACCOMMODATION CAPACITY

2 DESCRIPTION OF THE ACCOMMODATION
OFFER FOR ENAC STUDENTS

2-1 ADER BLÉRIOT Halls of residence

2-2 GALY - BASTIÉ - GARROS Halls of residence

3 DESCRIPTION OF THE ACCOMMODATION
OFFER FOR TRAINEES IN CONTINUING
EDUCATION AND EXTERNAL PARTNERS

4 PRICES AND ACCOMMODATION PRIORITIES

5 ASSOCIATED SERVICES

6 CONTACT AND ACCESS



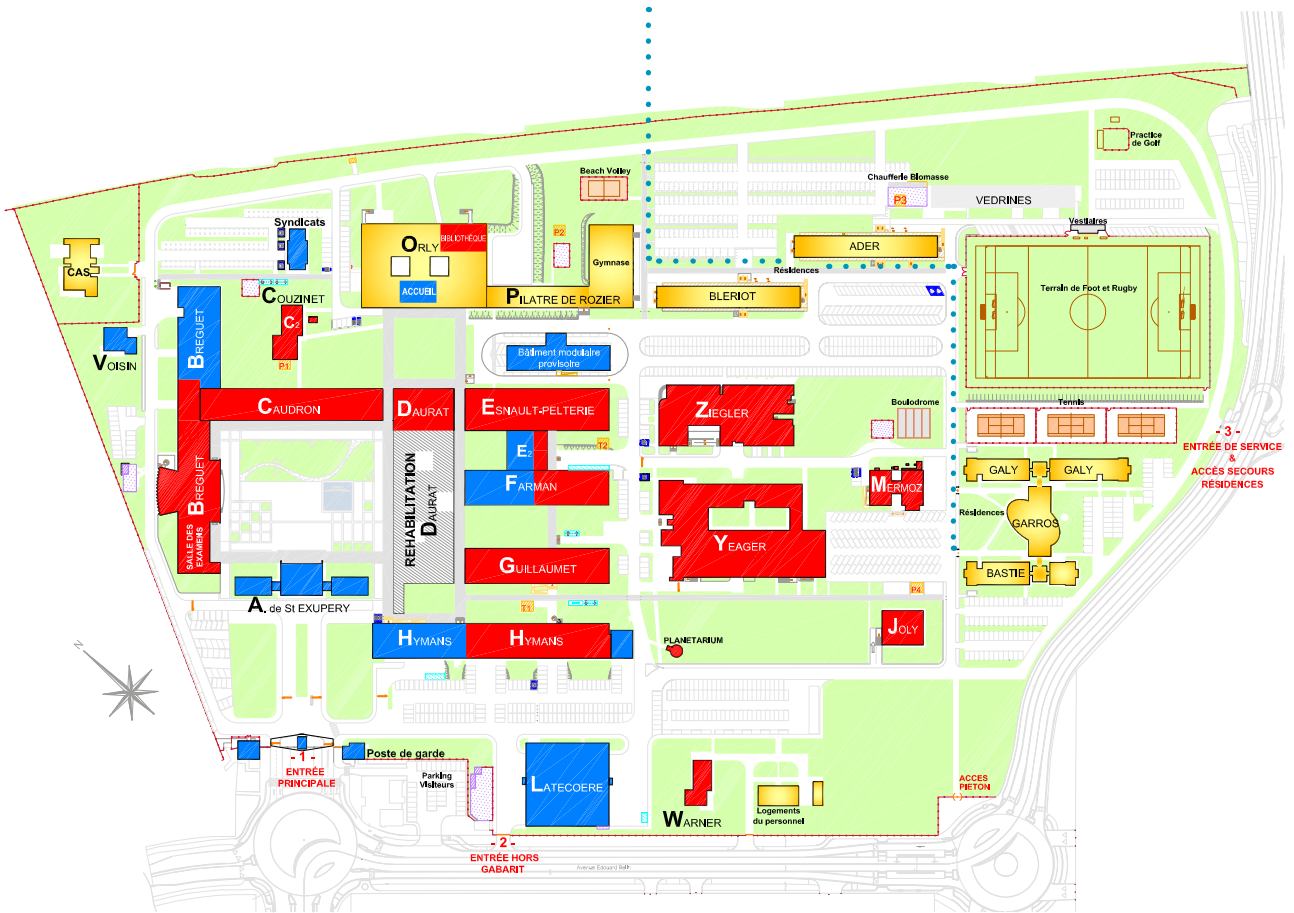
1

SITUATION AND ACCOMMODATION CAPACITY

Plan of the ENAC

Educational area

Residential area



At the HEART OF THE CAMPUS, the Toulouse ENAC currently has a residential park of 722 student apartments divided into the following :

- ✓ 302 x 16m² studios
- ✓ 420 x 12m² flatlets (small studios)

Including 10 x 20m² mini studios reserved for people with reduced mobility and 18 x 20m² mini “hotel” studios.

2

DESCRIPTION OF THE ACCOMMODATION OFFER FOR ENAC PUPILS

2-1 ADER and BLÉRIOT halls of residence

BLÉRIOT CAPACITY

- 209 x 12m² flatlets
- 14 x 20m² VIP (hotel services) studios

ADER CAPACITY

- 211 flatlets of 12m²
- 4 x 20m² VIP (hotel services) studios.

FLATLET FACILITIES

-EACH STUDIO/FLATLET HAS THE FOLLOWING FACILITIES:

- A 200 x 90cm bed with linen (cover, pillow, etc.)
- An equipped work top that can house a PC and its monitor
- A kitchenette equipped with storage cupboards, a shelf that can house a microwave, a sink unit, two electric hobs and a 110 litre fridge.
- A bathroom including a shower, a sink and a toilet.
- Storage space including a wardrobe and shelves.
- A bookcase.
- A desk chair.
- A foldable dining table.
- A desk lamp.
- A wall mirror.
- A three-function TV socket (FM, Satellite and DTT), a telephone socket allowing for access to the public telephone network (phone and ADSL).
- Free internet access via cable (RJ45 connection).
- 230V 50Hz electric grid supply voltage.
- An electrical lock controlled via near-by badge reader for the landing door.
- An intercom.
- A crockery kit.





2-2 GALY, BASTIÉ and GARROS halls of residence

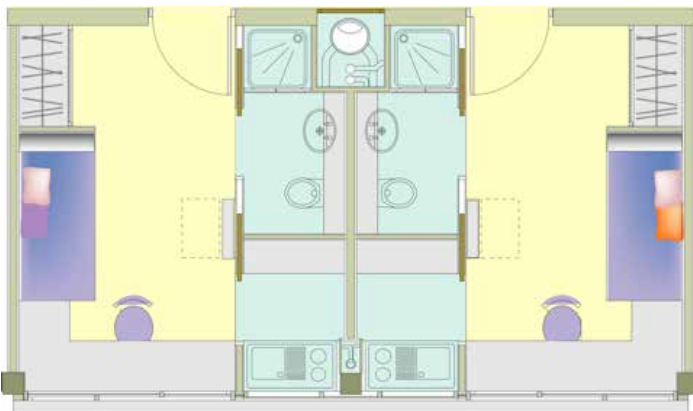
CAPACITY

- Capacity: 302 x 16m² studios and 6 x 20m² studios reserved for people with reduced mobility.

STUDIO FACILITIES

- EACH STUDIO HAS THE FOLLOWING FACILITIES:

- A 200 x 90cm bed with linen (cover, pillow, etc.)
- An equipped work top that can house a PC and its monitor
- A kitchenette equipped with storage cupboards, a shelf that can house a microwave, a sink unit, two electric hobs and a 110 litre fridge.
- A bathroom including a shower, a sink and a toilet.
- Storage space including a wardrobe and shelves.
- Storage space for large cases.
- A bookcase.
- A desk chair.
- A foldable dining table.
- A desk lamp.
- A wall mirror.
- A three-function TV socket (FM, Satellite and DTT), a telephone socket allowing for access to the public telephone network (phone and ADSL).
- Free internet access via cable (RJ45 connection).
- 230V 50Hz electric grid supply voltage.
- An electrical lock controlled via near-by badge reader for the landing door.
- An intercom.
- A crockery kit.



3

DESCRIPTION OF THE OFFER FOR TRAINEES IN CONTINUING EDUCATION AND EXTERNAL PARTNERS

ADER et BLÉRIOT halls of residence :
Facilities and services offered for the VIP (hotel services) studios

VIP STUDIO FACILITIES

- EACH STUDIO HAS THE FOLLOWING FACILITIES:

- A 200 x 140cm bed with linen.
- An equipped work top that can house a PC and its monitor
- A kitchenette equipped with storage cupboards, a sink, two electric hobs, a kettle, a microwave and a 110 litre fridge.
- A bathroom including a shower, a sink and a toilet.
- Storage space including a wardrobe and shelves.
- Storage space for large cases.
- A bookcase.
- A desk chair.
- A foldable dining table.
- A wall mirror.
- A stool.
- A desk lamp.
- A crockery kit including cutlery, plates, cups, glasses, bowls and cooking utensils
- 1 flat screen TV.
- 230V 50Hz electric grid supply voltage.



SERVICES INCLUDED

- Personalised welcome and accompaniment to your room.
- Every 3 days: sheets and bathroom laundry change and room cleaning.
- Provision of a comprehensive toiletries kit with collection of body products and tea and coffee sachets that is regularly restocked.
- Free internet access via cable (RJ45 connection).
- Television with free access to the range of international satellite channels.



4 PRICES AND ACCOMMODATION PRIORITIES

Rental prices from 1 January 2017

Accommodation prices **CIVIL SERVANT STUDENT:**

	Studios
Monthly	€495,00
Per night	€16,50

Accommodation prices **CIVILIAN STUDENT:**

	Flatlets (small studios)	Studios
Monthly	€282,00	€354,00
Per night	€9,40	€11,80

The rent is paid monthly via the ENAC Accounting Agency, preferably via transfer, if not in cash (only for sums under €300), by cheque or by bank card.

A deposit equal to a month's rent, reimbursable at the end of the school year, will be requested when registering.



Pricing for TRAINEES IN CONTINUING EDUCATION AND EXTERNAL PARTNER ACCOMMODATION

Weekly price in a studio (from Sunday 17:00 to Sunday 12:00)	€217,30
Price per night in a studio	€48,80
Weekly price in a VIP studio (from Sunday 17:00 to Sunday 12:00)	€270,50
Price per night in a VIP studio	€59,20

N.B.: Laundry kit + Cleaning included

Accommodation prices AGENT OF A PARTNER ESTABLISHMENT OF THE ENAC ACCOMMODATION (Any establishment in a regular relationship with the ENAC, or any establishment linked by an agreement)

	Studios	Flatlets (small studios)
Per night	€27,80	€21,60

Tarifs des Logements OTHER RESIDENT TYPE ACCOMMODATION

	Studios	Flatlets (small studios)	VIP
Per night	€38,60	€29,20	€59,20*

* Laundry kit + Cleaning included

Paying for a stay is done through the Accounting Agency two days before departure, in cash (only for sums under €300), by cheque or by bank card upon presentation of an accommodation form edited by the halls of residence reception.

ACCOUNTING AGENCY

OPENING HOURS

- Monday to Friday: 08:30 to 12:15 and 13:00 to 16:00
- Tel: 33 (0) 5 62 17 44 56 Fax: 33 (0) 5 62 17 44 75

5 ASSOCIATED SERVICES

THE ENAC makes the following services available to its residents:

- Coin-operated laundry in the ADER hall of residence including 10 washing machines and 4 dryers
- Laundry kit price: €13
- Cleaning: (upon request) €15 / Cleaning upon departure: €20
- Free internet access terminal in the Garros residence
- Internet access in accommodation
- Vending machines selling hot and cold drinks and sandwiches
- Sporting facilities including 3 tennis courts, 1 weights room, 1 artificial pitch and a gym (upon reservation) + Beach Volleyball court
- Bike/Motorbike rooms
- TV room (upon reservation)
- Self-service computer rooms
- Free access to the range of international satellite channels in the ADER and BLERIOT halls of residence
- Meeting rooms (upon reservation)
- Restaurant and cafeteria
- Twimm



Opening hours & Prices for the restaurant and cafeteria

RESTAURANT OPENING HOURS:

- During the week: 11:30 to 14:00 and 19:00 to 20:30
- At the weekend: 12:00 to 13:00 and 19:00 to 20:30

STUDENT PRICE WITH SUBSIDY:

- Average price of a meal: between €2.44 and €5.19
- Price of breakfast: between €1.66 and €2.36 (served in the cafeteria)

OPENING HOURS FOR THE CAFETERIA: PRICE WITHOUT SUBSIDY

- During the week: 07:15 to 15:00
- At the weekend: closed
- Average price of a meal: €8.31
- Average price of a breakfast: between €1.66 and €2.36 (served in the cafeteria)

6

CONTACT AND ACCESS



ADDRESS

Service Hébergement,
Service Hébergement,
Résidence Garros
7 avenue Edouard Belin
CS 54005
31055 Toulouse Cedex 4
Tel.: 33 (0)5 62 17 45 30
Fax: 33 (0)5 61 25 31 71
Email: hebergement@enac.fr



BY PUBLIC TRANSPORT

Metro line B (Faculté de pharmacie station) and Bus Line 78 (ENAC stop) or (Ramonville St-Agne station) and Bus lines 37 and 68 (ENAC stop)

<http://www.tisseo.fr>

TRAM ACCESS:

Airport: near to hall C, new Arrivals and the bus station.

First departure: 5:57 from the airport

Last departure: Airport: at 23:58

(from Sunday to Thursday;

Last departure at 00:20 on Friday and Saturday)

BY BIKE:

Vélo-Toulouse service (ENAC station numb. 223)

<http://www.velo.toulouse.fr>

GUIDELINES



FIRE PREVENTION

- Everyone must be aware of and observe the instructions displayed in the halls of residence, notably the safety instructions in the event of fire and the practical preventative advice

IN THE EVENT OF A FIRE

- GATHER At the meeting "point" by following the evacuation leader or fire warden

IN THE EVENT OF AN ACCIDENT OR MEDICAL EMERGENCIES



- Alert the site security post – 5555
- CONTACT the SAMU (ambulance) (15 or 18) or the FIRE BRIGADE (18) or 112

DISABILITY



- RESPECT the rules relating to disability
- RESPECT the reserved spaces
- Circulation spaces must remain free at all times



OTHER

- RESPECT THE SPEED LIMIT IN PLACE ON THE SITE

EURO-QUALITY SYSTEM

